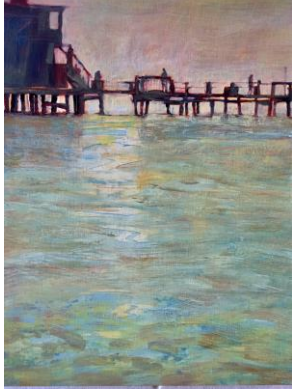


# WENDY PRELLWITZ

## FRONT MAIN DINING ROOM



*Rod and Reel Pier*, 24 x 28, acrylic & oil on panel, unframed

\$1600



*Early Morning, Under the Pier*, 24 x 18, oil on panel, unframed

\$1600



*October Evening, Richmond Creek*, 12 x 24, oil on panel, unframed

\$1200



*River Currents*, 12 x 16, oil on panel, unframed

\$1400

3½ Wendell St, Cambridge MA 02138

Box 75, 7134 Indian Neck Lane, Peconic, NY 11958

Studio: 20 Vernon St, Somerville MA 02175

cell: 617-448-3605

wendyprellwitz@gmail.com [www.wendyprellwitz.com](http://www.wendyprellwitz.com)



*Softest of Mornings, Hello*, 40 x 30, acrylic & oil on panel, unframed \$4000



*October Morning*, 24 x 18, oil on paper, unframed \$1500



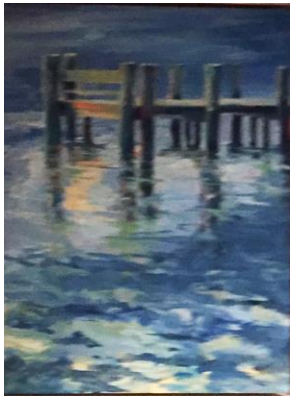
*November Morning*, 24 x 18, oil on panel, unframed \$1500

## BAR AND CENTER DINING ROOM



*Spring Field #4*, 17 x 19 monotype, framed

\$1000



*October Morning Glow*, 24 x 18, oil on panel, framed

\$1800



*Flowing #8*, 24 x 18 acrylic on paper mounted on panel, unframed

\$1800



*Flow #3* 23.5 x 18, monotype, framed

\$1100

## END COMMON DINING ROOM



*Currents #1*, 30 x 22, watercolor monotype, framed

\$1300



*Morning Glow*, 17.5 x 21.5, monoprint, framed

\$1100



*Channel #1*, 23.5 x 18 monoprint, framed

\$1200



*First Light*, 17.5 x 21.5 monoprint, framed

\$1100



*August Creek #1*, 13.5 x 15, oil on panel, framed

\$1650



*August Creek #2*, 13.5 x 15, oil on panel, framed

\$1650