

WENDY PRELLWITZ

Exhibited Work on display at the Chandler Gallery, October 30 to November 30, 2014

Chandler Gallery, 20 Sacramento Street, Cambridge, MA 02138, (617) 349-6287

Monday through Friday 10 AM - 5 PM / Open by appointment with Wendy on Saturdays.

FLOW

New Prints Inspired by Water



Flow No.1

Monotype & woodcut, 24" x 18", 2013



Flow No.2

Monotype, soy ink on Revere paper, 24" x 18", 2013

3½ Wendell St, Cambridge MA 02138

Box 75, 7134 Indian Neck Lane, Peconic, NY 11958

Studio: 20 Vernon St, Somerville MA 02175

cell: 617-448-3605

wendyprellwitz@gmail.com www.wendyprellwitz.com



Flow No.3

Monotype, soy ink on Revere paper, 24" x 18", 2013



Departure No.2

Monotype, soy ink on Revere paper, 24" x 18", 2013



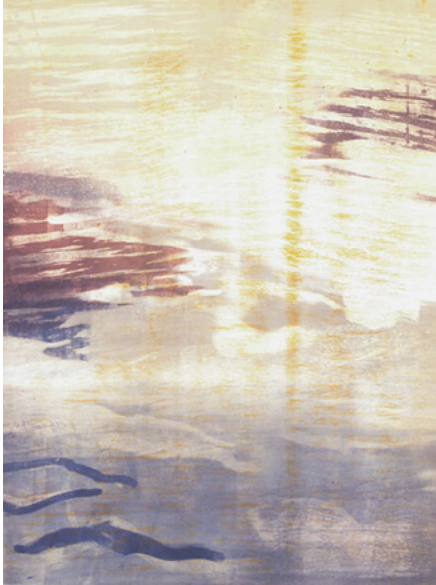
Departure No.3

Monotype, soy ink on Revere paper, 24" x 18", 2013



Here to There

Monotype & woodcut, soy ink on Revere paper, 24" x 18",
2014



Flow No. 6

Monotype & woodcut, soy ink on Revere paper, 30" x 22½", 2013



Flow No. 7

Monotype & woodcut, soy ink on Revere paper, 30" x 22½", 2014



Winter Thaw

Monotype, soy ink on Revere paper, 44½" x 22" 2014



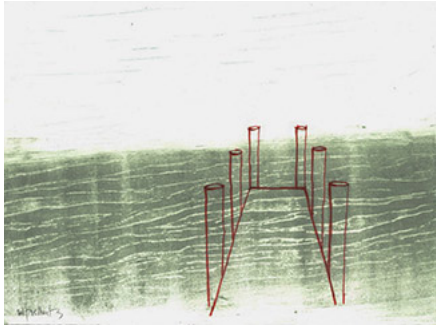
Channel No.6

Monotype & woodcut, soy ink on Revere paper, 22½" x 30", 2014



Channel No.8

Monotype & woodcut, soy ink on Revere paper, 22½" x 30", 2014



Departure

Awarded First prize in Direct/Indirect exhibit

Monotype, woodcut & pencil, soy ink on Revere paper, 11" x 15", 2014



Departure No. 6

Monotype and etching, soy ink on Revere paper, 11" x 15", 2014



Channel

Monotype, crayon rubbing & pencil, soy ink on asian paper, 11" x 14³/₄", 2014



January Moon

Monotype, 10" x 21", 2012



Summer Creek

Monotype, 10" x 21", 2012
